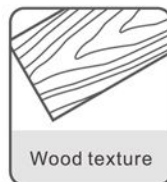


nexwood

PLASTIC POLYSTYRENE DECORATIVE MOULDINGS



PROFILES



BASEBOARD 1

W: 97.5mm (3.87")
H: 15.5mm (0.61")
L: 2900mm (9.5')

BASEBOARD 2

W: 96mm (3.78")
H: 15.5mm (0.61")
L: 2900mm (9.5')

BASEBOARD 3

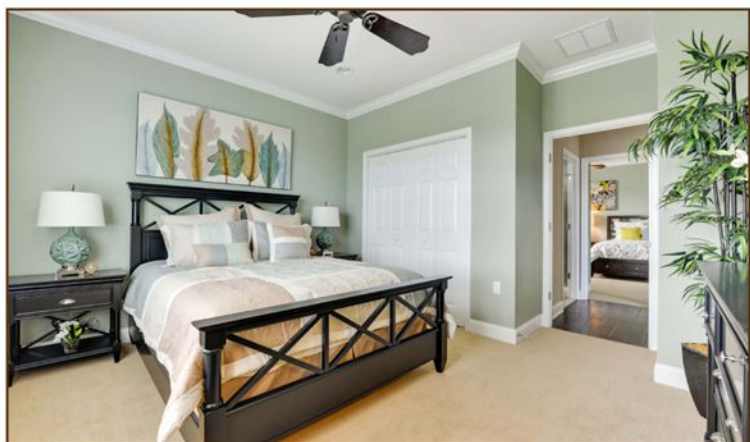
W: 80.1mm (3.15")
H: 14.7mm (0.58")
L: 2440mm (8')

BASEBOARD 4

W: 42.3mm (1.67")
H: 8.3mm (0.33")
L: 2440mm (8')

CORNICE 1

W: 100.9mm (3.97")
H: 20.4mm (0.8")
L: 2900mm (9.5')



Plain White 01

White Ash 02

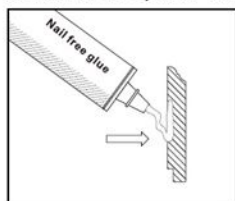
Applewood 03

Honey Oak 04

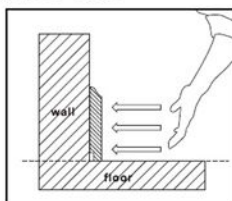
Chocolate 05

Espresso 06

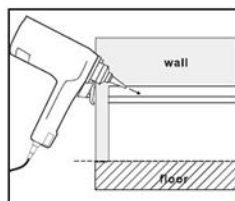
Installation Option 1: Nail-free Glue



Apply nail-free glue equally to the notch of the baseboard

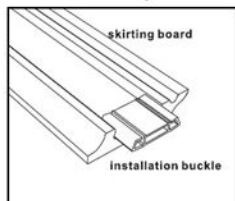


Clean the wall surface, make sure it is flat before you place the baseboard to the wall. Press tightly.

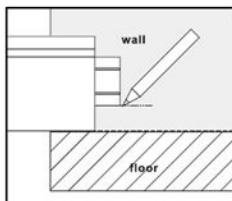


Use a nail gun to nail it when necessary. Cover the nail head with lacquer putty or color pan.

Installation Option 2: With Buckles



Create a guide by cutting a small piece of the baseboard and fix the installation buckle.



Mark the place for the nail fixing. 40cm is a suitable interval between buckles. Use narrower intervals near the joints.



Fix the installation buckles on the marked place. Snap on the baseboard afterwards.

K-PLAST, INC.

1856 Maria Orosa St. Malate, Manila
Tel (02) 525-8913, 525-5447, 523-4041, 536-3584/85
Fax (02) 521-7771
www.kplast.net

CEBU: F.Uy Bldg. Tipolo Hwy, Mandaue City
(032) 344-9173, 343-3407

LA UNION: Sitio 5, Diversion Rd. San Fernando, La Union
(072) 888-5458

LIPA: DAYLIGHT DESIGNS Ayala Hwy, Brgy. Balintawak
(043) 455-1746